

# CARE CLOSER TO HOME



**WHAT WE LEARNED ABOUT CARE  
CLOSER TO HOME**

# What this is about

Some people in Powys are well enough to leave hospital, but they can't go home.

They have to stay longer because help at home is not ready yet.



# Why is this important ?

If people stay in hospital too long:

It can make them sad or worried.

They might get weaker or less healthy.



Others who need the hospital can't get in.



# Our project

We looked at:

People's stories and complaints.



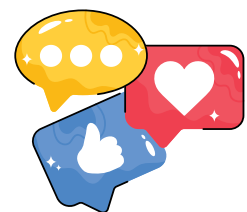
What the health board and council told us.



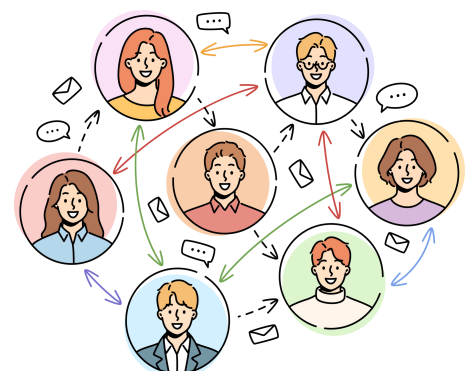
Visits to care homes and special units in hospitals.



Comments from people on social media.



Ideas from carers, staff and patients.



# What people told us

## Delays Getting Help at Home

People wait too long for:

Care packages (care at home).

Help from a social worker.

Space in a care home.



## Home Changes Take Too Long

Some people need things like:

Ramps or bathroom changes, but these changes are very slow, so they stay in hospital



## Not Enough Carers

There are not enough people to give care in rural places.

Sometimes families have to pay for private care. This is hard.



## Communication Problems

People said:

They don't know who to talk to.

Hospitals, social workers and families are not talking to each other.





# Care is Not Always the Same

People said care changed too much:

New carers every day.

No clear plan after hospital.



## Money Problems

Some people must pay for care or things they need at home.



# What staff told us

## Problems

Senior staff don't always listen to carers or nurses.



People are sent to the wrong care units.



Not enough trained care workers.



Some places refuse to give care if it's too far away.



# What we saw at “Ready to Go Home” units

These special units help people leave hospital safely.

## Good things

Patients feel more independent.

Staff are kind.

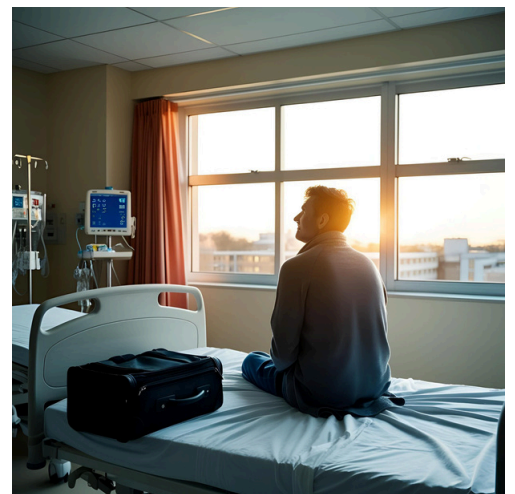
People like the space and support.



## Not so good

Still too many delays with care at home.

Not enough physiotherapy to help recover.





# Want we think should happen

## Talk More

Hospitals, carers and families should work together better.



## Help Staff

Train and keep care workers.

Give better pay and travel help.



Teach about end-of-life care

## Fix Homes Faster

Local companies could help.

Make urgent home changes quicker.



## Support Carers

Give money and training to family carers.



## Better Data

Keep track of people who go back to hospital too soon.



## Fair Support in Rural Areas

Don't say no to care just because it's "too far".



# Get in touch

Want to share your story ?



**Call us:** 01686 627632

**Email:** [powysenquiries@llaiscymru.org](mailto:powysenquiries@llaiscymru.org)